

TFP

Try Full Power co.

Contents

Try Full Power (TFP)





Products:

- › 16 mm pipes
- › drip irrigation pipes
- › Flat drip irrigation tape
- › PVC Layflat hose
- › Drip irrigation fittings

› Soft polyethylene pipes LDPE

- Use polyethylene materials with grade PE40
- 8779 -2020 Iso Production in accordance with the standard
- production power from 16 to 32
- production power from SDR 9 to SDR 26
- Production of pipes in -100meter coils 100m,200m and400m
- Resistant to environmental thermal tension and UV rays
- 10 year product warranty
- Ease of installation

Pipe series												
SDR 26	SDR 21	SDR 17	SDR 13.6	SDR 11	SDR 9							
S 12.5	S 10	S 8	S 6.3	S 5	S 4	Pressure Category						
----	PN 2.5	PN 3.2	PN 4	PN 5	PN 6	PE 32						
PN 2.5	PN 3.2	PN 4	PN 5	PN 6	PN 8	PE 40						
Wall Thickness												Nominal size
e max	e min	e max	e min	e max	e min	e max	e min	e max	e min	e max	e min	
--	--	--	--	--	--	--	--	1.4	1.1	1.7	1.4	12
--	--	--	--	1.3	1.0	1.5	1.2	1.8	1.5	2.1	1.8	16
--	--	1.3	1.0	1.5	1.2	1.8	1.5	2.3	1.9	2.7	2.3	20
1.3	1.0	1.5	1.2	1.8	1.5	2.3	1.9	2.7	2.3	3.2	2.8	25
1.6	1.3	1.9	1.6	2.2	1.9	2.8	2.4	3.3	2.9	4.1	3.6	32





> Drip irrigation pipe

- Use polyethylene materials with grades PE32 and PE40
- Production size of 12,16 and 20 mm
- Variety kind of drippers normal, PC, NDPC
- Variety discharge of drippers (4-2 L/H)
- Packing in 200 and 400 m coils according to customer request
- Ease of installation and operation
- Used in farms and gardens and parks



Kind of Dropper	Outside Diameter (mm)	Distance of Drippers (cm)	Nominal Flow Rate (l/h)	Working Pressure (bar)	Max. Working Pressure (bar)	Roll length (m)	wall thickness (mm)
Normal	12-16-20	20-100	4	1	4	400 - 200	0.9-1-1.05-1.1-1.15-1.2-1.4

Maximum Lateral Length Meters For 4 and 2 LPH Flow rate (Normal dripper)

Pipe 16 mm						Diameter	Pipe 20 mm					
100	75	50	40	30	20	Spacing cm	20	30	40	50	75	100
153	127	98	84	70	54	2 LPH Flow	83	109	130	152	197	238
98	81	62	54	45	34	4 LPH Flow	53	69	83	96	124	150

Kind of Dropper	Outside Diameter (mm)	Distance of Drippers (cm)	Nominal Flow Rate (l/h)	Working Pressure (bar)	Max. Working Pressure (bar)	Roll length (m)	wall thickness (mm)
PC-NDPC	12-16-20	20-100	4 - 2	4 - 0.8	4	400 - 200	0.9-1-1.05-1.1-1.15-1.2-1.4

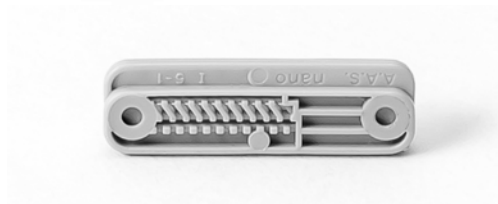
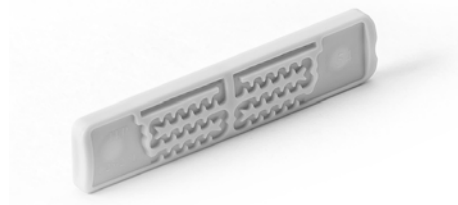
Maximum Lateral Length Meters For 4 and 2 LPH Flow rate (PC and NDPC dripper)

Pipe 16 mm						Diameter	Pipe 20 mm					
100	75	50	40	30	20	Spacing cm	20	30	40	50	75	100
248	205	158	135	112	70	2 LPH Flow	130	170	205	240	310	370
156	130	100	85	63	40	4 LPH Flow	86	112	135	156	203	245



> Flat drip irrigation tape

- Use of MDPE polyethylene materials
- Possibility of production in thicknesses of 150 to 900 mic (6 TO 36 mil)
- Possibility of production with distances of 10 cm or more
- according to customer's request
- Variety of discharges 1.6 - 1.4 - 1.25 - and 2.5 L/H
- Possibility of production in diameters of 20-16 and 22 mm
- Special design of symmetrical drippers with two water inlets
- and two water outlets
- Special design of pressure breaker channels of drippers for self-washing





Maximum Lateral Length Meters For 1.25 LPH Flow rate										
Tape16mm					Diameter	Tape20mm				
30	25	20	15	10	Spacing cm	10	15	20	25	30
143	129	112	93	71	%1Down Hill	104	135	163	189	213
126	113	97	80	62	Zero Slope	90	117	142	163	185
100	89	77	64	50	%1Up Hill	70	93	110	126	146

(1.25l/h)

p_i (kpa)	q_i (l/h)
50	0.91
80	1.11
100	1.28
120	1.38
144	1.5

Maximum Lateral Length Meters For 2.5 LPH Flow rate										
Tape16mm					Diameter	Tape20mm				
30	25	20	15	10	Spacing cm	10	15	20	25	30
93	82	71	59	47	%1Down Hill	66	86	104	120	135
80	71	62	51	41	Zero Slope	57	75	90	105	118
64	56	49	40	31	%1Up Hill	45	59	70	81	93

(h/2.5)

p_i (kpa)	q_i (l/h)
50	2.03
80	2.21
100	2.47
120	2.77
144	2.85

Maximum Lateral Length Meters For 2 LPH Flow rate										
Tape16mm					Diameter	Tape20mm				
30	25	20	15	10	Spacing cm	10	15	20	25	30
108	95	83	69	54	%1Down Hill	77	100	120	140	156
95	84	74	61	48	Zero Slope	68	89	106	125	139
82	69	54	50	37	%1Up Hill	56	73	82	95	114

(1.25l/h)

p_i (kpa)	q_i (l/h)
50	1.5
80	1.71
100	1.94
120	2.14
144	2.45

Maximum Lateral Length Meters For 2.5 LPH Flow rate										
Tape16mm					Diameter	Tape20mm				
30	25	20	15	10	Spacing cm	10	15	20	25	30
93	82	71	59	47	%1Down Hill	66	86	104	120	135
80	71	62	51	41	Zero Slope	57	75	90	105	118
64	56	49	40	30	%1Up Hill	45	59	70	81	93

(h/2.5)

p_i (kpa)	q_i (l/h)
50	2.03
80	2.21
100	2.47
120	2.77
144	2.85

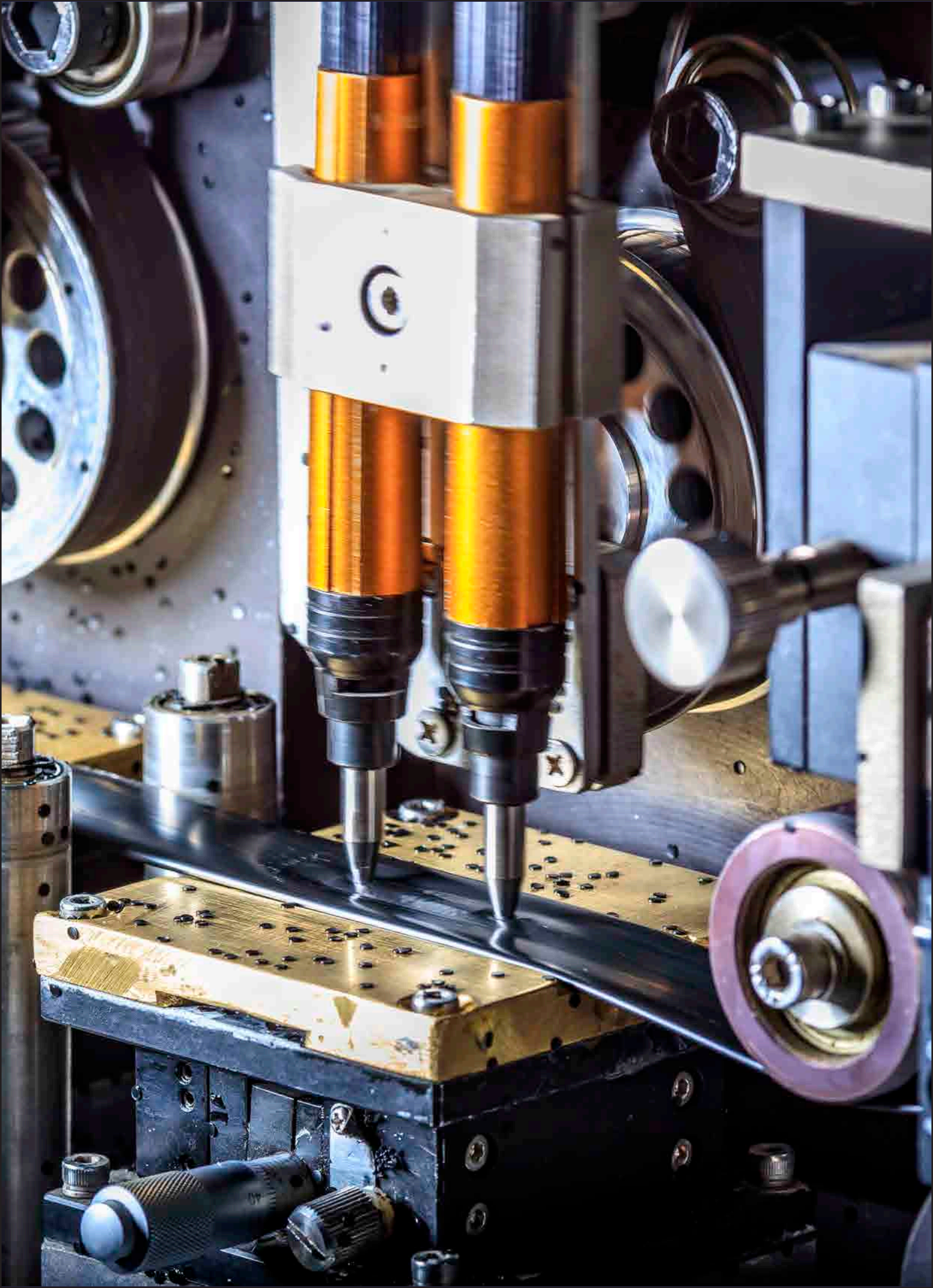


Maximum Lateral Length Meters For 1.6 LPH Flow rate										
Tape16mm					Diameter	Tape20mm				
30	25	20	15	10	Spacing cm	10	15	20	25	30
124	110	95	79	60	%1Down Hill	88	115	138	160	180
107	96	82	64	53	Zero Slope	77	100	120	140	158
83	75	65	54	42	%1Up Hill	60	79	93	100	122

Diameter (mm)	Spacing (cm)	Wall Thickness (mil)	Flow rate (L/H)	Operation Pressure (Bar)	Filtration Requirement	
					L/H	Mesh
20-16	100-10	6	1.25	1.0	1.25	120
		7	1.6		1.6	130
		8	2.5		2.5	120

(1.6l/h)

p(kpa)	qi(l/h)
50	1.11
80	1.44
100	1.58
120	1.72
144	1.88





> PVC Layflat hose

- Use of A grade of PVC compound
- Use of compressed polyester yarn texture
- Production size from 2" to 63 (76mm to 160mm) High flexibility
- Easy to carry and maintain
- Used in farms, pastures, gardens, mines, and industrial and construction projects
- Impact resistant
- Easy installation of fittings
- Resistant to chemicals materials
- Packing of 50 and 100 meter coils
- Ability to collect and store at the end of the cultivation season
- 4 years quality guarantee
- Temperature range from 10- to 60+

5PVC Lay Flat Hose (4 Bar)

Size	Inside Diameter (mm)	Wall Thickness (mm)	Working Pressure (bar)	Broken Pressure (bar)	Coil Weight (kg)	Coil Length (m)	Packing Diameter (mm)
2	53	1	4	12	23	100	600*90
2.5	66	1.15	4	12	33	100	110*650
3	78	1.15	4	12	36	100	130*650
4	112	1.2	4	12	30	50	180*500
5	128	1.3	4	12	35	50	220*500
6	162	1.35	4	12	45	50	260*500

5PVC Lay Flat Hose (6 Bar)

Size	Inside Diameter (mm)	Wall Thickness (mm)	Working Pressure (bar)	Broken Pressure (bar)	Coil Weight (kg)	Coil Length (m)	Packing Diameter (mm)
2	53	1.3	6	18	30	100	660*90
2.5	66	1.4	6	18	43	100	720*110
3	78	1.45	6	18	50	100	730*130
4	112	2.3	6	18	45	50	180*550
5	128	2.3	6	18	52	50	220*500
6	162	2.4	6	18	83	50	260*580



Fitting

Name	Code	Number in the box
OFF TAKE LAY FLAT VALVE FOR PIPE & TAPE	30050007	200
OFF TAKE / 16 mm SHUT OFF VALVE TO TAPE	30050010	250
VALVE OF 16 TO 16 mm PIPE	30050019	300
COUPLING WITH LOCKING RING FOR TAPE	30050019	400
COUPLING WITH LOCKING RING FOR PIPE 16 mm	30050004	600
COUPLING FOR TAPE	30050006	400
OFF TAKE TEE COUPLING FOR TAPE	30050020	300
OFF TAKE / PIPE16 CONNECTOR FOR TAPE / PIPE16 mm	30050016	500
OFF TAKE CONNERCTOR FOR TAPE	30050022	800
ONLINE DRIPPER 4-8 L/H	30050013	1000
Pipe 16 to pipe 16 connector	30050021	2000
Off Take connector for pipe 16	30050006	1800
LAY FLAT PUNCHER	30050020	***
END PLUGE	30050009	1000
OFF TAKE WASHER NARROW,BROAD	30050014	2000
PLUG WASHER	30050014	2000





Drip irrigation connections



30050016 connector 16 Off take / Pipe
16mm for tape / Pipe



30050022 off take connector for tape



30050004 16mm Coupling with locking ring for Pipe



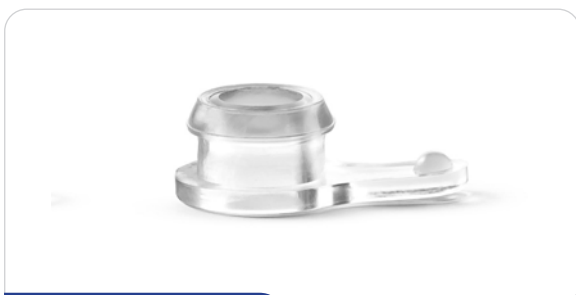
30050019 16mm Pipe to 16 Valve



30050006 coupling for Tape



30050024 Layflat wrench



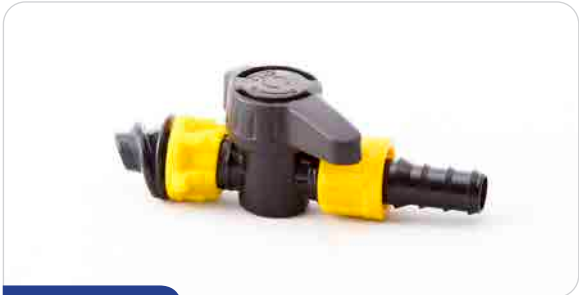
30050017 - 30050015 Washer



30050014 Washer



30050020 Off take tee coupling for tape



30050007 Off take lay flat valve for pipe & Tape



30050011 Layflat Puncher



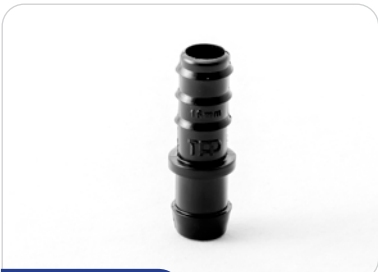
30050001 Coupling with locking ring for tape



30050009 End Plug



30050010 16mm shut off valve to tape / Off take



30050021 Off take connector



30050023
16 m m
connector to
16mm Pipe



30050013 | 30050018 L/H 8-4 online dripper

